

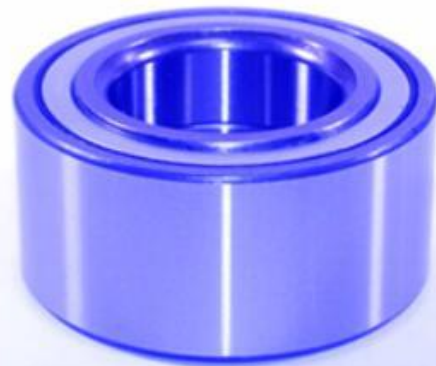
## The Main car type Ac Compressor Bearings Size Chart & Bearing Interchange

The Main car type are Honda, Isuzu, Mazda, Fuji, Daihatsu, Suzuki, Nissan Nissan, Mitsubishi, Nissan Nissan Diesel, Hino, Hyundai Denso compressors Toyota Hilux 98-52, Honda, Mitsubishi, Mazda, Chrysler, BMW, Mercedes-Benz, Porsche, Jaguar, Rover, Fiat, GM, Kia, John Deere and Toyota.

The English abbreviations and symbols used and the bearing installation parts are explained in ac compressor bearings Size Chart detail in the appendix.

Based on years of work experience, the technical meaning of the ac compressor bearings model and the front and rear suffixes has been scientifically verified, and some of the difficult bearing universal interchange technologies have been mastered.

For the introduction of automobile production lines, manufacturers of imported bearings, automobile drivers, bearing warehouse administrators, supply and marketing (purchasing) personnel, foreign trade workers, universities and colleges, as well as technicians and auto parts of imported automobile maintenance and repair industries, etc.



Bearings Size Chart			ac compressor bearings Cross references	Application
Inner	Outer	Width	Interchange number	
30	45	18	NACHI 30BG04S22G-2DL, NSK 30BD4518T12DDUKCG21	Car Truck Bus
30	47	12	NACHI 30BX04S1DST	Hyundai passenger cars
30	47	18	NACHI 30BGS04S8G-2DS, NACHI 30BG04S16G-2DSTF, NSK 30BD4718DDUKK, KOYO 83A693	Sanden and Denso compressors
30	47	21/18	KOYO 83A693ACS20	Isuzu
30	52	20	NACHI 30BG32G-2DST	
30	52	22	NACHI 30BG05S2G-2DS, NACHI 30BG5222-2DSE, NACHI 30BGS10G-2DST2F, KOYO DAC3052-32RR9XS, NIPPONDENSO 949100-4570 NIPPONDENSO 949100- 4760, TOYOTA 51802600	NipponDenso10PA15-10PA17-10PA20 Denso compressors Toyota Hilux 98-52, Honda, Mitsubishi, Mazda, Chrysler, BMW, Mercedes-Benz, Porsche, Jaguar, Rover, Fiat, GM, Kia, John Deere
30	55	23	NACHI 30BG05S5G-2DS, NACHI 5006-2NSL, NSK 30BD40AT12DDUCG21SBU2ENRL, OE 51441200, OE 51655700, OE 51651700, OE 50178800, OE 50184000, OE 51655700	NipponDenso10PA17C-10PA20C, Ford FX15-FS10 Behr, Bosch, Diesel Kiki, Nihon, York compressors (Ford, Hyundai and Kia).
30	62	26,99	NACHI 30BGS1G-2DSKAI, NACHI 30BGS1G-2NSL, KOYO BD30-11A	Chrysler and White compressors
32	47	18	NACHI 32BG04S3G-2DL, NSK 32BD4718DU	Ogura compressors, vacuum pumps for Akti industrial trucks, and Matsushita compressors for Suzuki passenger cars.
32	52	20/18		Seiko-Seiki air conditioning compressors BMW 3 series, and Mercedes Benz smog pumps
32	55	13		
32	55	23	NACHI 32BG05S1-2DST, NSK 32BD4ST12DDUCG21, OE 51550900, OE 50295200, OE 51501200, OE 51749900	Matsushita, Panasonic, < seiko Seiki, York compressors Mazda vehicles
35	55	20	NACHI 35BG05S7G-2DST, NACHI 35BG05S7G-2DL, NSK 35BD5020DDUCG21, KOYO DAC35500020, NTN SNR ACB35X50X20,	Delphi, Mitsubishi, Sanden, Seiko Seiki compressors Mitsubishi and Mazda vehicles.

			FCK 30BF5020, OE 51555200, OE 51771400	
35	52	12	NACHI BX5212S1-2DST2B1	Denso compressors 6SEU12C (Fiat Stilo, Mercedes Benz Class A, Toyota Yaris)
35	52	20	NACHI 35BG5220-2DL, NSK 35BD5220DF, NTN SNR ACB35X52X20	
35	52	22	NACHI 35BG05S6G-2DST2F NACHI 35BG5222-2DL, KOYO DAC35520022, NSK 35BD5222DDUM18A, NTN SNR ACB35X52X22	Delphi and Denso compressors. Denso 6CA17, 7SB16C
35	55	20	NACHI 35BG05G-2DS, NACHI 35BG05S10G-2DST2, NACHI 35BG05S16G-2DL, NACHI 35BGS5S10G-2DST2 NSK 35BD219T12DDUCG21ENSL, NSK 35BD219T12DDUK8CG21EAIL, NTN SNR ACB35X55X20, KOYO 83A694, KOYO DAC3555RD3H, OE 51651600, OE 51793800, OE 50985400, OE 51427500, OE 51323500, OE 51799900, OE 51216600	Sanden SD505, 507, 708, 709, 7V16, 5H13, 5H14, 7H13, 7h15, Diesel Kiki DSK15BH-DSK15CH ; Nihon DKV14C-DKV14D ; Seltec CH-TM Diesel Kiki, Matsushita, Nihon, Sanden, Seltec compressors on Kia, Hyundai, GM and Chrysler vehicles
35	62	21	NACHI 35BG06G-2DS, NIPPONDENSO 949100-2720	
35	62	24	NSK 35BD6224AT12, NSK 35BD6224DDUK, NSK 35BD6224DV, FCK 35BD6224, NTN SNR ACB35X62X24	Zexel DCW
38	54	17	NACHI 38BG05S2G-2DS, NACHI 38BG05S6G-2DST2F, NACHI 38BG05S6G-2DST2FB, NIPPONDENSO 949100- 4810	Denso compressors Suzuki, VW and Diat vehicles
40	55	24	NACHI 40BGS40G-2DST	Mitsubishi compressors
40	57	24	NACHI 40BG05S2G-2DS, NSK 40BD4ST12DDUCG21ENSL	Mitsubishi and Sanden compressors
40	62	20,6	NACHI 40BG62020-2DLCS, NACHI 40BGS8G-2DS, NSK 40BD49T12DDUCG33, NSK 40BD49T12DDU28DCA- 3AENSK7, NTN 2TS2DF0893LLACS01, KOYO 83A5519, GM 6557684, 6559469, DAEWOO 712019-NBR-2CS	Delphi V5, Harrison A6 - R4, Keihin 150 L- 150R Keihin, Seiko Seiki compressors on GM, Daewoo vehicles

40	62	24/20,6	NACHI 40BGS12G-2DS, NACHI 40BGS36G-2DST2F, NSK 40BD49AWT12DDU5CS75PAISRIL, NIPPONDENSO 949100-4610, 949100-4860	Denso compressors Ford, Hino, Mazda vehicles
40	62	24	NACHI 40BG11G-2DS, NACHI 40BGS11G-2NSL, NACHI 40BGS35G-2DL, NACHI 40BGS35G-2DST, NACHI 40BGS35G-2DSTF, NACHI 40BGS11G-2DS, NSK 40BD219T12DDUCG21ENSL, NSK 40BD219DU, NTN 2TS2DP0865LLBS45/SC, KOYO 83A551B4CS2, NIPPONDENSO 949100-4850, NIPPONDENSO 949100- 2710, NTN SNR ACB40X62X24	Denso, Hitachi, Nihon, Sanden, Seiko Seiki compressors on Toyota, Daihatsu, Mitsubishi, Rover, VW, Fiat, John Deere vehicles. Sanden SD507, 508, 510, 708, 709, 5H13, 5H14, Diesel Kiki DKS, Hitachi MJS170;Nihon DKV14C, NipponDenso 10P13C-10P15C-10P17C; Ogura 6"
40	66	24	NACHI 40BG39G-2DL, NACHI 40BGS39G-2DST	Mitsubishi compressors
45	75	32	NACHI 45BG07S5G-2DST2F, NIPPONDENSO 949100-4800	Fuso vehicles
50	72	20	NACHI 50BG07S1	